



## **CITY OF LIGHTHOUSE POINT**

### **Floodplain Management Plan 2018 Annual Report**

**To: Mayor and City Commissioners**  
**Fr: Charles Schramm, PSM, Public Works Director**  
**Date: April 18<sup>th</sup>, 2019**

**Re: 2018 Annual Floodplain Management Progress Report, Community Rating System  
Activity 510**

#### **Introduction:**

The City of Lighthouse Point participates in the Federal Emergency Management Agency's Community Rating System (CRS) program for Special Flood Hazard mitigation and flood preparedness. CRS is a voluntary incentive program that recognizes and encourages community floodplain management activities that exceed the minimum National Flood Insurance Program requirements. Lighthouse Point's participation in the CRS program requires annual recertification or the activities that presently result in a 10% reduction in flood insurance policy premiums for properties within the city. This report was prepared in accordance with the annual recertification requirements of the CRS. The regular recertification cycle now runs from January 1st through December 31<sup>st</sup> of each year. This is the second year of the present 5-year plan cycle which extends through December 31<sup>st</sup>, 2023. This report specifically addresses the 2018 calendar year.

#### **Floodplain Management:**

The Broward County Enhanced Local Mitigation Strategy serves as the basis for the City of Lighthouse Point's floodplain management plan. The ELMS was developed by the County, municipalities, and community stakeholders to reduce and/or eliminate risks associated with natural and man-made hazards. The ELMS was adopted by the Broward County Board of County Commissioners on February 5th, 2013. Copies of the plan are available for review at the Broward Emergency Management Agency, 201 NW 84th Avenue, Plantation, Florida 33324, and at the following web site:

<http://www.broward.org/BrowardEMD/Responders/Pages/LocalMitigationStrategy.aspx> .

Quarterly meetings are held at the EOC building (address listed above) to discuss different portions of the plan and mitigation strategies with all attending stakeholders.

#### **Flood Hazard Update:**

New FEMA Flood Insurance Rate Maps (FIRMs) for Broward County were effective on August 18th, 2014. Under the new maps, many properties within the city experienced changes to their flood zone designation. The new maps are based on elevation information gathered using an aerial laser scanning technology known as LIDAR, which uses pulsed radar to measure ranges

from a GPS-located aerial sensor. This method of measurement yields many more data points, hence the revised and more detailed FIRM rate maps. The updated map of Broward County is available at the following web site:

<http://bcgis.maps.arcgis.com/apps/OnePane/basicviewer/index.html?appid=0b1b5ffc6f8440f9ab23d688bb79f063> .

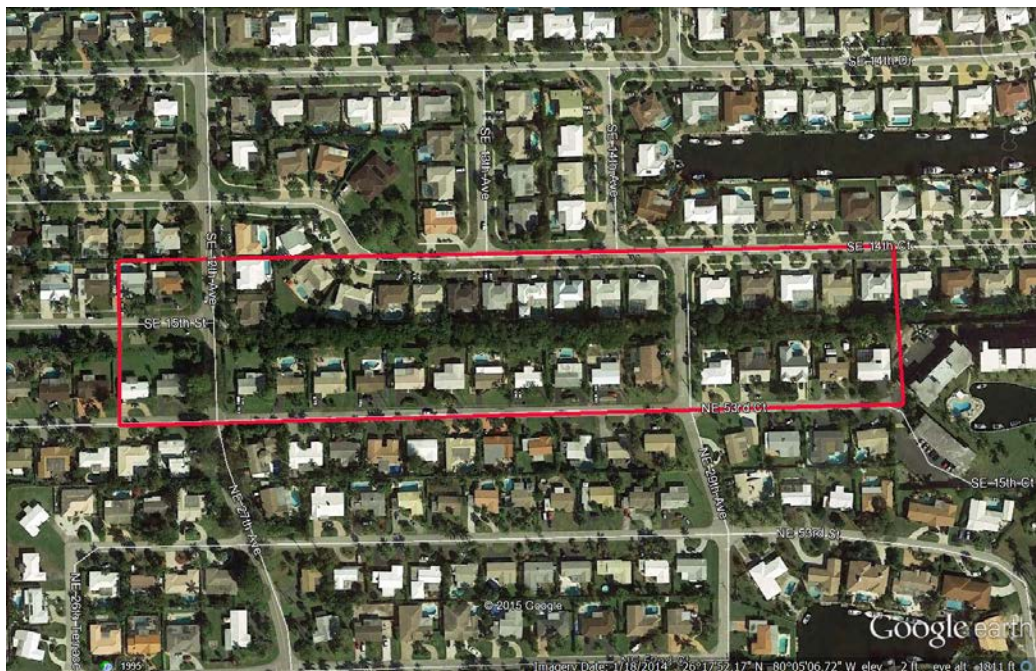
On June 25th, 2014 FEMA initiated a multi-year coastal mapping study in Broward County. The study focuses on flooding conditions in coastal areas, including impacts from wave action and storm surge. When the study is complete, FEMA will use the results to again update the Flood Insurance Rate Maps.

### **City of Lighthouse Point Municipality Floodplain Management Projects:**

During the past year, the City has continued to provide the maintenance and keep the records required to recertify our participation in the CRS program. Projects directly related to storm water and floodplain management were the following:

- **NE 53rd Court Drainage Waterway:** The agreement between the City of Deerfield Beach and the City of Lighthouse Point was renewed to share costs for monthly foliage maintenance within the historical drainage waterway located along the City's North boundary just north of NE 53rd Court. Keeping this drainage structure clear of debris and overgrowth fosters the designed storm water runoff management. Additionally, City staff has applied for and anticipates receiving funds from the Federal government through the Natural Resource Conservation Service to perform a more extensive cleaning of the waterway to remove leftover storm debris and improve the natural water flow. This project is pending notification that the funds are available.

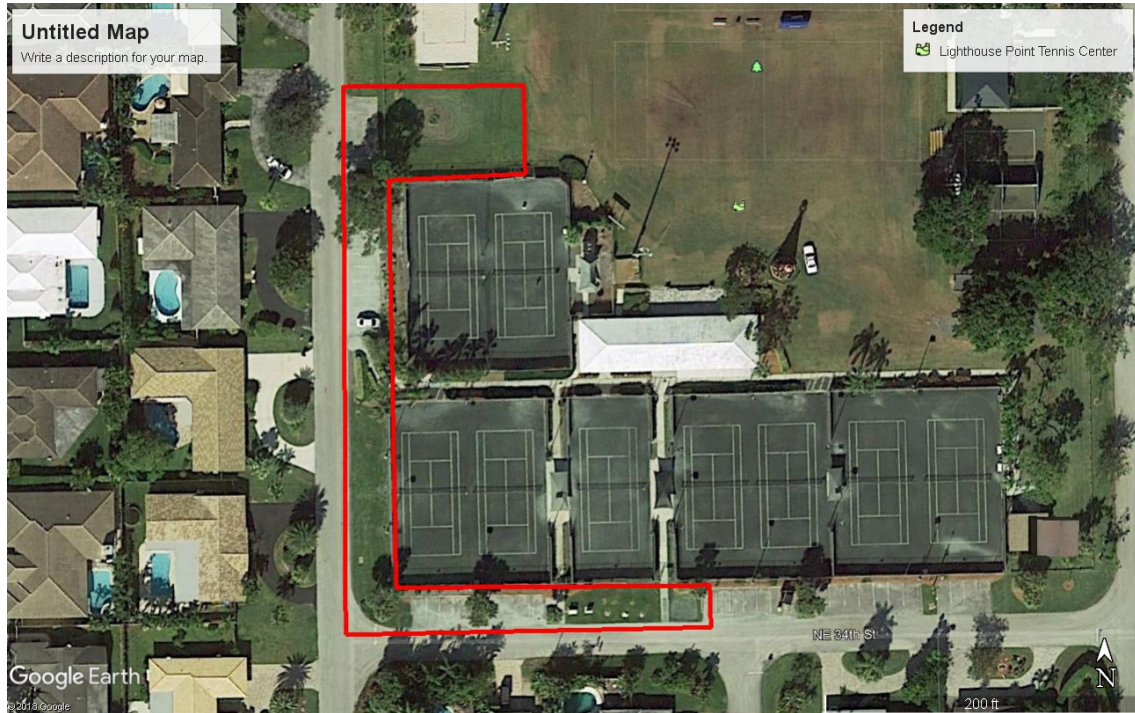
**Project Status:** Ongoing with agreement renewable on a yearly basis.



- **Area drainage maintenance: NE 29<sup>th</sup> St. to NE 39<sup>th</sup> St:** All city drains and outfalls were inspected and cleaned as needed in specified area.

**Project Status:** 97 structures; 8,750 LF of pipe cleaned; 3 pipe runs (460 LF) of pipe repaired using Cast In Place Pipe liners. Project is ongoing and will focus on area of City north of NE 39<sup>th</sup> St in 2019.

- **Tennis Center Drainage Improvements:** Project involved the addition of six (6) drainage structures, 210 LF of drainage pipe, 325 LF of treatment swales and various improvements to the parking and sidewalks to facilitate drainage flow, retention, and runoff treatment.



**Project Status:** Completed and functioning properly.

The City continues to provide outreach to its property owners by way of the City website, newsletter, and telephone with regard to flood zone information. The newsletter is mailed to every property owner on an annual basis. The information is also on display at the City's public buildings and its Library.

The City's Building Department continues to maintain both on site and off site elevation certificates for the new or substantially improved buildings. Upon request, elevation documentation and Flood Insurance Rate Map information is provided to the public. Technical advice and assistance is provided either in person or over the phone to those interested property owners. Available documentation is publicized and displayed on the community's website.

The City maintains its open space preservation sites. The City's Stormwater Master Plan describes the storm water management requirements including soil and erosion control and water quality. The City enforces its regulations prohibiting dumping into the drainage system and local waterways. The drainage system is inspected and maintained on an on-going basis. A Capital Improvement Plan is ongoing for drainage system improvements.

### **Summary and Recommendations:**

The City of Lighthouse Point will continue to participate in the Broward County Multi-jurisdictional Local Mitigation Strategy and the Community Rating System programs in an effort to minimize hazard risks and gain flood protection benefits for its residents and the environment.

The City will implement projects to mitigate regular ponding and drainage system issues during heavy rain events.

The City will continue to provide information and outreach, including the newsletter and web site postings, and provide brochures and flyers to convey the importance of obtaining and keeping flood protection and deliver consistent information relating to disaster mitigation to all residents and local businesses in the City.

The City will continue to disseminate the latest flood information available through its website. Contact information and other pertinent links are also provided on this website.

This report is being provided to the Mayor and City Commissioners, and also is available for the public to view on the City's website, [www.lighthousepoint.com](http://www.lighthousepoint.com) . Hard copy may be reviewed at the City Clerk's Office, 2200 NE 38 Street, and the Public Works Department at 4730 NE 21 Terrace.